



The Model PS32 comes with a graphical display based on Chip-On-Glass and FSTN technology, which gives a sharp, readable display that won't lose segments throughout its life.



APPLICATIONS

- Sprinkler & drip irrigation systems
- Well monitoring & automation
- Water distribution and surface water
- Gravity turnouts from underground pipelines
- Commercial nurseries, chemigation & fertigation
- Water and wastewater management

DESCRIPTION

The **PS32 Clamp-On Saddle Meter** is designed for irrigation and other low pressure services with up to 150 PSI working pressure. The stainless steel saddle and U-straps permit installation on a wide range of steel, cast-iron, plastic (3/16" PVC wall minimum), Transite, and other pipe materials for each nominal meter size. Upon ordering, it is necessary to furnish the I.D. dimension of the pipe that the meter is to be mounted on for calibration purposes. The pipe O.D. dimension (20" max.) or wall thickness must also be furnished for proper sizing of the U-straps.

INSTALLATION

The installation of the PS32 is performed by cutting a hole in the existing pipeline. The meter must be securely attached to the line using the U-straps that are included with the unit. A fully developed flow in a full pipe is required for accuracy purposes. Any obstructions, such as valves or fittings, must be placed at a minimum of 10 pipe diameters upstream and 2 pipe diameters downstream of the meter. Upstream straight pipe requirements can be reduced to 5 diameters with the use of straightening vanes.

OPTIONAL EQUIPMENT

OCTF-XX: Pulse Output Kit—Includes 6+ feet of cable
 RMTF-XX: Remote Mount Kit—Up to 100 feet of cable
 TR420: 4-20 mA Output—DC Powered (9-30 Vdc) transmitter

INDICATOR-TOTALIZER

The Model PS32 meter is equipped with a battery-powered microcontroller-based indicator-totalizer. The digital display features a 5-digit autorange indicator and an 8-digit totalizer, which can be configured to the operator's desired units in a matter of seconds. All TechnoFlo meters are entirely field-programmable and include a scaled pulse output. Once programmed, a passcode can be used to lock the settings and prevent unauthorized changes to the transmitter's functions and parameters. The aluminum housing on the PS32 meter provides the indicator-totalizer with increased protection against the elements and hazards encountered in the field.

MATERIALS

- Housing**— Powder-coated aluminum
- Propeller**— Injection molded thermoplastic
- Drop Pipe**— 304 Stainless steel
- Saddle**— 304 Stainless steel
- U-Straps**— 304 Stainless steel
- Bearing**—Long-life, water-lubricated ceramic

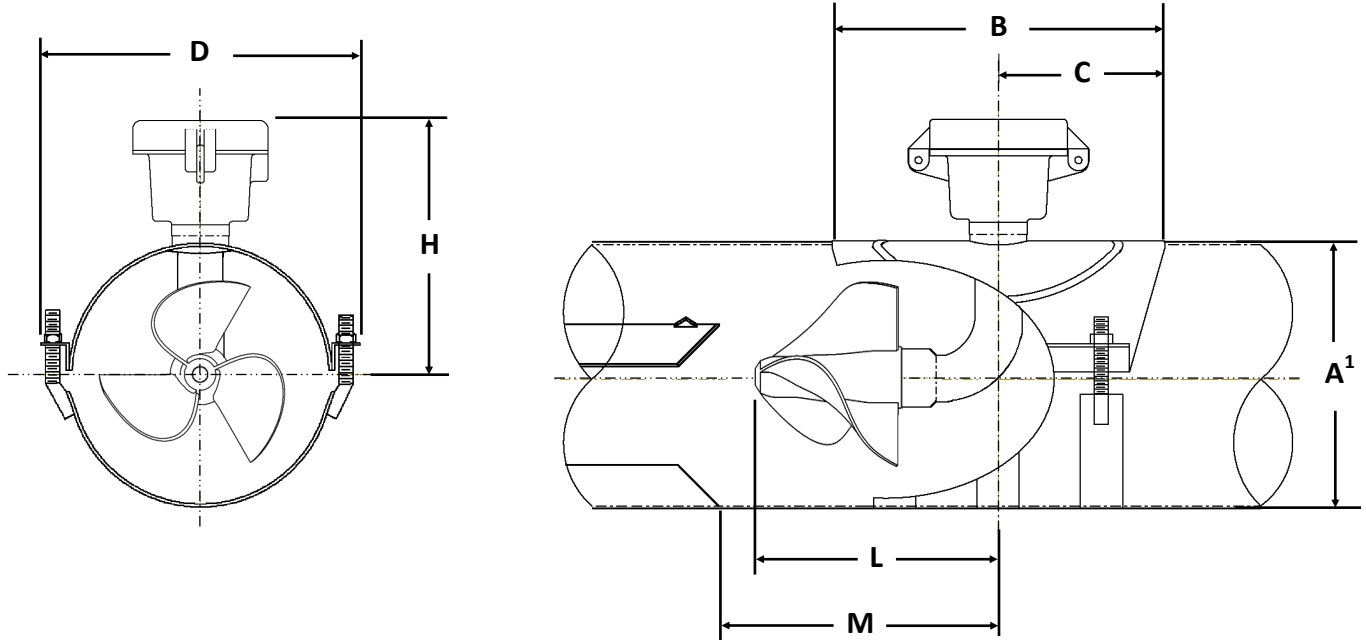
SPECIFICATIONS

- Accuracy:** +/- 2% of actual flow
 +/- 1% over reduced range
- Max. Temp:** 140 °F Maximum
- Pressure Rating:** 150 PSI (Max. working pressure)
- Battery Life:** 5+ years (depends on hours of use)

Meets AWWA C704-12 Standard

MODEL PS32

150 PSI Clamp-On Saddle Meter
 Electronic Propeller Meter
 Stainless Steel Strap-On Saddle
 Digital Indicator-Totalizer
 Sizes 4" through 20"



METER & PIPE SIZE	FLOW RANGES, GPM			DIMENSIONS, INCHES							SHIPPING WEIGHT, POUNDS	
	MIN	MAX	INT	A	B	C	D	H	L	M		
4	75	500	625	4 1/2	9 3/4	3**				9 1/2	12	
6	160	1200	1500	6 5/8	12	6				9 1/2	12	
8	190	1500	2000	8 5/8	12	6				9 1/2	12	
10	260	2000	3000	10 3/4	12	6				9 1/2	12	
12	275	3000	3500	12 3/4	12	6				9 1/2	12	
14	350	4000	4500	14	12	6				9 1/2	12	
16	450	5000	6000	16	12	6				9 1/2	12	
18	550	6000	7500	18	12	6				9 1/2	12	
20	650	8000	9000	20	12	6				9 1/2	12	

1. Please Specify Pipe I.D. And O.D.

** The gearbox on the 4" is not on the centerline of the saddle:

- Dimensions L & M should be measured from gearbox centerline instead.

Seametrics • 19026 72nd Avenue South • Kent, Washington 98032 • USA
 (P) 253.872.0284 • (F) 253.872.0285 • 1.800.975.8153 • seametrics.com